

## Technical Bulletin

### Drying tubes and Sicapent® for Elementar® analysers

#### New 30 g pack size for Sicapent®

In the Elementar® range of analysers, Sicapent® is used as a drying agent in drying tubes. It is an extremely effective desiccant but is hazardous, as it is phosphorus pentoxide on a support. It is hygroscopic and will form phosphoric acid in contact with water.

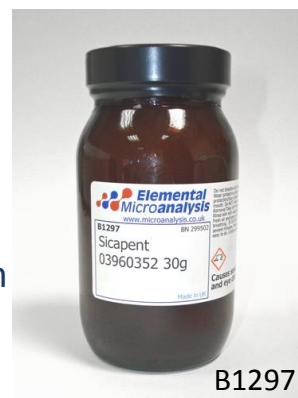
Elemental Microanalysis offers various drying tubes compatible with Elementar® analysers, as shown in the product table below.

Elemental Microanalysis can provide all the products required for filling these drying tubes ready for analysis, – including very fine quartz wool and Sicapent®, a stainless steel ladle (E2001), and funnels (E2526, E2527) for easy transfer of Sicapent® into the tubes.

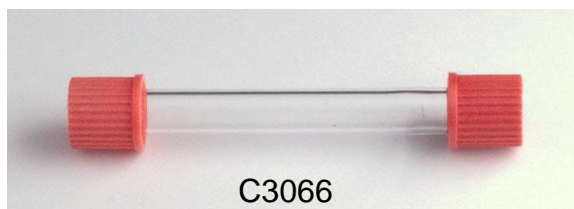
Elemental Microanalysis has introduced a 30 g pack of Sicapent®, which can ship as excepted quantity, and will not incur a hazardous surcharge.

30 g pack of Sicapent® now available.

No hazardous surcharge when shipped



B1297



C3066



C3047



C3026



C3038

EMAL Part no	Description	Elementar® part no
<a href="#">E2001</a>	Stainless Steel Sicapent Ladle with 300mm handle	
<a href="#">B1297</a>	Sicapent 03960352 30g	03 960 352
<a href="#">B1197</a>	Sicapent 03960352 (2.8L) 500g Phosphorus Pentoxide	03 960 352
<a href="#">E2526</a>	Powder filling funnel (small) with silicone tubing outlet	34.00-0051/4
<a href="#">E2527</a>	Powder filling funnel (large) with silicone tubing outlet	
<a href="#">B1017</a>	Silica (Quartz) Wool Very Fine 5gm	
<a href="#">B1208</a>	Silica (Quartz) Wool Very Fine 10gm	03 679 908
<a href="#">B1276</a>	Silica (Quartz) Wool Very Fine 15 g	
<a href="#">B1102</a>	Silica (Quartz) Wool Very Fine 502-177 50gm	
<a href="#">E1174</a>	Filter Diameter 18mm	03002399
<a href="#">E2516</a>	Cotton Wool, 50g	05001715
<a href="#">C1143</a>	Drying tube , 300mm GL14	15.00-0080
<a href="#">C3026</a>	Drying tube 348 mm GL25	16.00-1012
<a href="#">C3038</a>	U-Tube Large Complete with GL18 Caps	34 001 339/4
<a href="#">C3047</a>	Drying tube short, 150mm, GL25	16.00-1037
<a href="#">C3066</a>	Drying tube, 110mm with GL14 end caps	22 160 204/4
<a href="#">C3008</a>	Drying Guard Tube, 110mm, GL14	22 160 200/4

# Technical Bulletin

## Drying tubes and Sicapent® for Elementar® analysers (continued)

Quartz wool was specified to plug the ends of drying tubes for the early Elementar® analysers such as the vario EL III®, and the rapid N®.

However, fine pieces of this wool may come loose and might cause solenoid valves to fail. For this reason, users may prefer to try the alternatives of our [E1174 Filter](#), or [E2516 Cotton wool](#), for plugging the drying tube ends. These are equivalents to the filters and cotton wool now specified by Elementar® for their newer cube analysers.

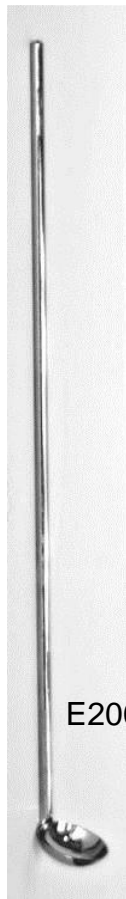


E2526

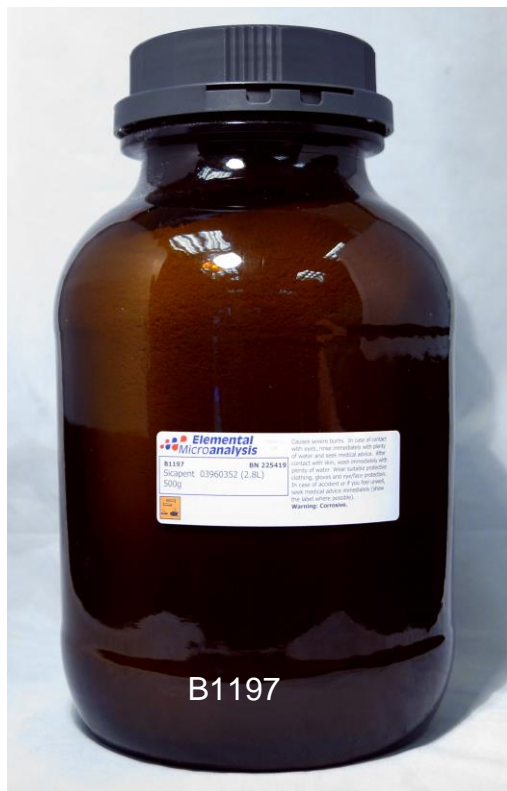


E2527

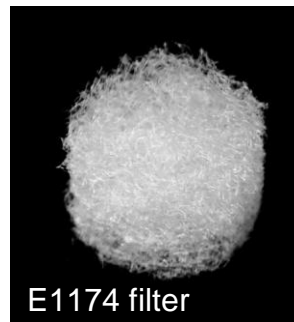
Our website also features a video with step-by-step instructions on the process of filling drying tubes here: <http://www.elementarmicroanalysis.com/instructional-videos.php>



E2001



B1197



E1174 filter



E2516 cotton wool

These products offer the same high quality and value for money that is typical of Elementar Microanalysis' entire product range. Available to order from our ISO 9001 factory online, by email, telephone or fax. Elementar Microanalysis offers extensive knowledge of analysis, over 40 years of experience and a worldwide reputation for excellence.